



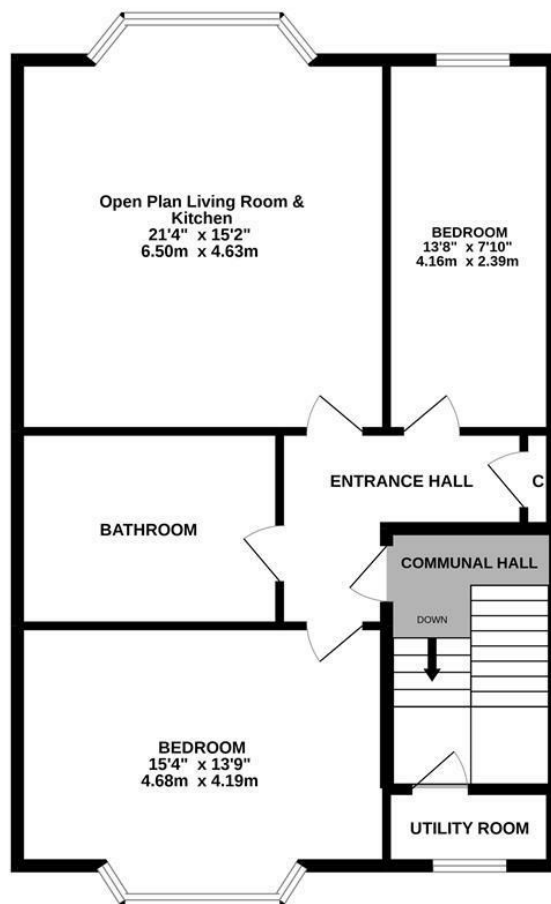
Anglesea Terrace, St. Leonards-On-Sea TN38 0QS

Offers in excess of £190,000



Bright TWO BEDROOM apartment located on the second floor of this attractive, CENTRAL ST. LEONARDS residence with a STUNNING VIEW ACROSS GENSING GARDENS. It's enviably positioned just a short stroll from local stores, eateries and coffee shops and within easy reach of the seafront, beach and mainline railway station. The accommodation here enjoys a generous, OPEN PLAN LIVING SPACE with a modern fitted kitchen and breakfast bar. The LARGE BAY WINDOW frames a beautiful Southerly aspect with views of Gensing Gardens. There are two bedrooms, the main bedroom measures an impressive 15'4 x 13'9 and there is a SPACIOUS BATHROOM with a bath and separate shower enclosure. There is also a HANDY UTILITY AREA, with plumbing and power for a washing machine, accessed via the communal hallway. Being sold with a LONG LEASE and NO ONWARD CHAIN this fantastic property would make the PERFECT FIRST TIME HOME or seaside retreat.

SECOND FLOOR
809 sq.ft. (75.1 sq.m.) approx.



TOTAL FLOOR AREA : 809 sq.ft. (75.1 sq.m.) approx.

Whilst every attempt has been made to ensure the accuracy of the floorplan contained here, measurements of doors, windows, rooms and any other items are approximate and no responsibility is taken for any error, omission or mis-statement. This plan is for illustrative purposes only and should be used as such by any prospective purchaser. The services, systems and appliances shown have not been tested and no guarantee as to their operability or efficiency can be given.
Made with Metropix ©2022

